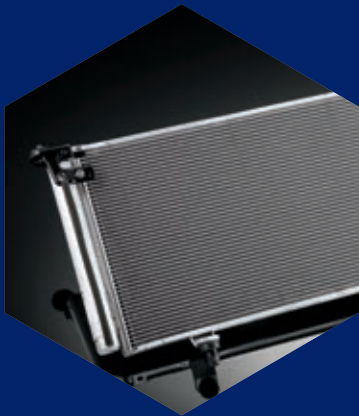


# Authorized Genuine Subaru Replacement Parts & Accessories Limited Warranty

Replacement parts and accessories warranty information

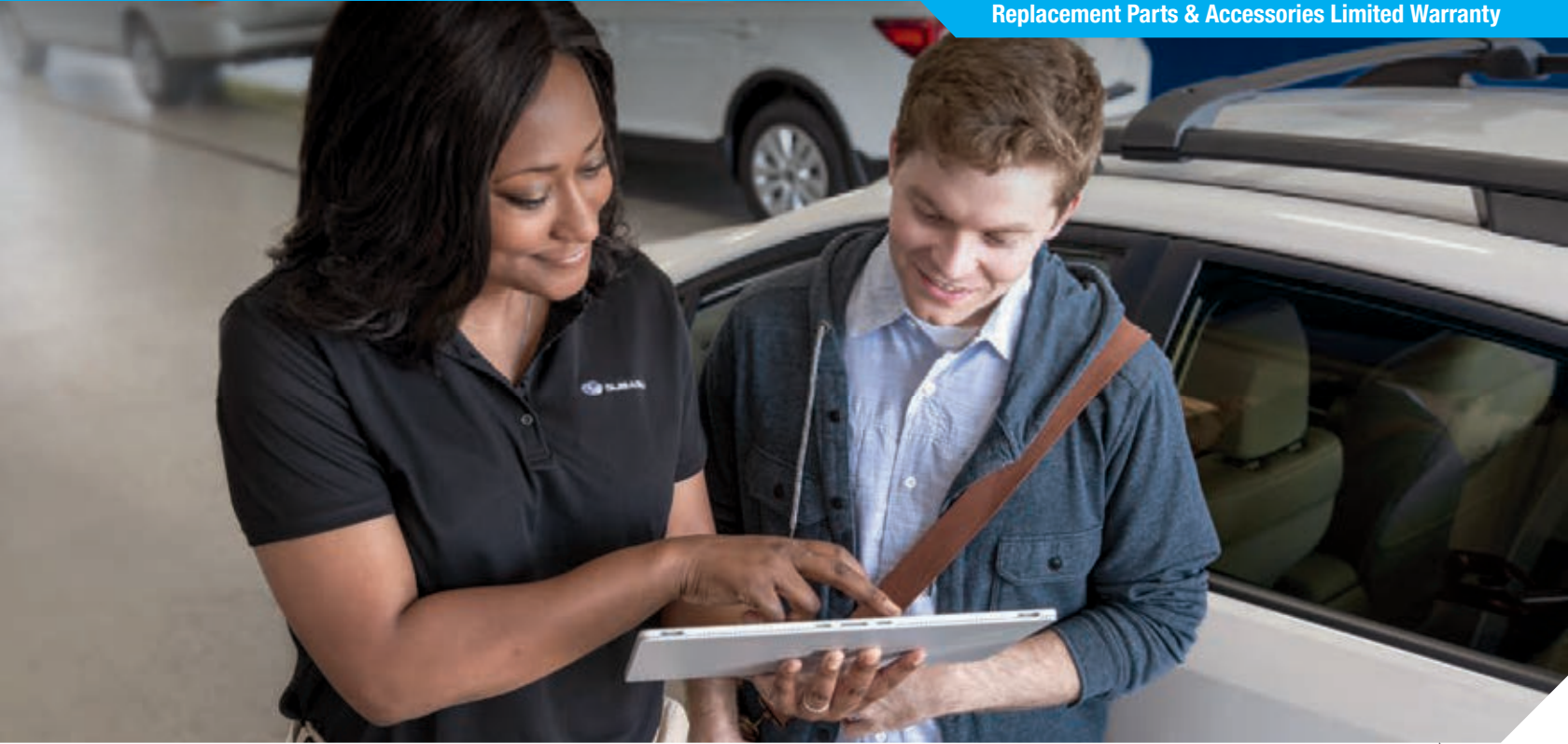


Genuine Subaru Replacement Parts & Accessories are not only engineered to fit and perform optimally with your vehicle, they are each backed by our unlimited-mile/one-year warranty. This protection is included with any part or accessory purchase at no additional charge to help ensure your confidence after replacement or installation. Please read the following sections for complete details concerning warranty coverage and any exclusions and/or restrictions that may apply.



# Authorized Genuine Subaru

Replacement Parts & Accessories Limited Warranty



## Limited Parts & Accessories Warranty: 3 Things to Know

- 1** We stand behind any Authorized Genuine Subaru Replacement Parts & Accessories installed at our store. If the part or accessory fails to perform or breaks down with normal use within one year\* of purchase, you may return it to us for repairs or replacement.
- 2** All Authorized Genuine Subaru Replacement Parts & Accessories are covered by the Authorized Genuine Subaru Replacement Parts & Accessories Limited Warranty for one year\* – regardless of the number of miles you've driven.
- 3** Save any Authorized Genuine Subaru Replacement Parts & Accessories receipts you receive. They establish the date of purchase, and can quicken the repair or replacement process, if required.

This warranty is part of our commitment to provide you with a professional and trusting service experience.

For full details on coverage, please refer to your Warranty & Maintenance Booklet.

## WHO MAKES THIS WARRANTY

This warranty is made by Subaru of America, Inc. (SOA)\*\*  
One Subaru Drive, Camden, NJ 08103.

## WHO IS COVERED

This warranty only applies to Authorized Genuine Subaru Replacement Parts & Accessories purchased for use on an applicable Subaru vehicle from an authorized Subaru retailer located in the United States.

Every owner of the vehicle during the warranty period shall be entitled to the benefits of this warranty. If the vehicle is sold or otherwise transferred during the warranty period for the part or accessory, it is recommended that the new owner be given proof of purchase documents for the part or accessory.



\*Excluding wear items and certain performance parts that are sold "as is" without any warranty coverage. \*\*For parts and accessories sold in Hawaii only. This warranty is made by Servco Pacific Inc. Administrative Offices, 2850 Pukoloa St., Suite 300, Honolulu, HI 96819, 1-808-564-1300, which is responsible for all matters related to the warranty on such parts and accessories.

### WARRANTY ON WHOLESALE PARTS

Authorized Genuine Subaru Replacement Parts & Accessories sold by authorized Subaru retailers to wholesale accounts for resale to retail customers are covered by the Authorized Genuine Subaru Replacement Parts & Accessories Limited Warranty. Warranty coverage on those parts or accessories begins on the date the parts or accessories are sold to a retail customer by the wholesale account.

The Authorized Genuine Subaru Replacement Parts & Accessories Limited Warranty starts one year from the date of installation with no mileage limitation.

In addition, Authorized Genuine Subaru Remanufactured Transmissions are covered under the following warranties, whichever provides the greatest coverage:

- The balance of any applicable Subaru New Vehicle Limited Warranties, or
- The Authorized Genuine Subaru Remanufactured Transmission Limited Warranty: 2 years or 24,000 miles (whichever comes first) from the date of installation, or
- The Authorized Genuine Subaru Replacement Parts Limited Warranty one year from date of installation with no mileage limitation

Also, Authorized Genuine Subaru Remanufactured Short Blocks are covered under the following warranties, whichever provides the greatest coverage:

- The balance of any applicable Subaru New Vehicle Limited Warranties, or
- The Authorized Genuine Subaru Remanufactured Engine Limited Warranty: 3 years or 36,000 miles (whichever occurs first) from date of installation, or
- The Authorized Genuine Subaru Replacement Parts Limited Warranty: one year from date of installation with no mileage limitation

Claims for defective “wholesale” parts must be submitted through the normal warranty claim submission procedures.

A valid vehicle identification number (VIN) is required and determines the parts handling allowance based on the model year of the vehicle. Claims cannot be processed without a valid VIN. Claim entry requires the following:

- VIN of the vehicle on which the part was installed
- Vehicle mileage at original installation
- Previous retail invoice/repair order number
- Previous retail invoice/repair order date
- Vehicle current mileage

In addition, the selling retailer is required to retain and submit, upon request, copies of invoices or other receipts sufficient to confirm the following:

- The retailer’s sale to the wholesale account
- The wholesale account’s sale to the retail customer
- The date of the retail sale

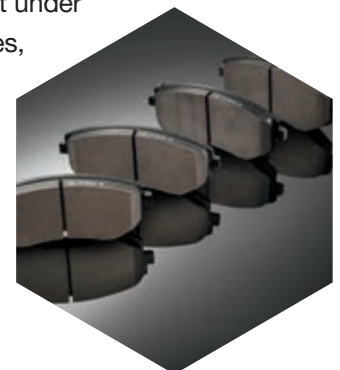
In accordance with the terms of this warranty, coverage extends only to the reimbursement of the part or accessory. There will be no coverage provided for labor expenses unless the part or accessory was installed by an authorized Subaru retailer.

### DURATION OF THIS WARRANTY

This warranty begins on the day an Authorized Genuine Subaru Replacement Part or Accessory is purchased. The warranty is one year, regardless of mileage (except for wear items), or for the period of coverage remaining for the particular part under the Subaru New Vehicle Limited Warranties, whichever is longer.

### Authorized Genuine Subaru Remanufactured Parts

Authorized Genuine Subaru Remanufactured Replacement Parts are warranted for one year regardless of mileage unless specified otherwise, or for the period of coverage remaining for the particular part under other Subaru Limited Warranties, whichever is longer.



## Authorized Genuine Subaru Remanufactured Transmission Limited Warranty

Authorized Genuine Remanufactured Transmission assemblies supplied by SOA are warranted by the following Subaru Limited Warranty where the greatest coverage applies:

1. The Authorized Genuine Subaru Replacement Parts Limited Warranty: one year from date of installation with no mileage limitation.
2. The Authorized Genuine Subaru Remanufactured Transmission Limited Warranty: 2 years or 24,000 miles (whichever occurs first) from date of installation.
3. The balance of any applicable Subaru New Vehicle Limited Warranties.

## Authorized Genuine Subaru Remanufactured Short Block Limited Warranty

The following Subaru Limited Warranty that provides the greatest coverage applies:

1. The balance of any applicable Subaru New Vehicle Limited Warranties, or
2. The Authorized Genuine Subaru Remanufactured Engine Limited Warranty: 3 years or 36,000 miles, whichever occurs first, from date of installation, or
3. The Authorized Genuine Subaru Replacement Parts Limited Warranty: one year from installation with no mileage limitation.

## WHAT IS COVERED

This warranty covers any repairs needed to correct defects in material or workmanship that occur under normal use in any Authorized Genuine Subaru Replacement Part & Accessory purchased after retail sale of the Subaru vehicle in which the part or accessory is installed in/on the vehicle. Authorized Genuine Subaru Replacement Parts or Accessories installed in/on the vehicle prior to retail sale of that vehicle are covered under the Subaru Limited Vehicle Warranty that appears in the vehicle's Warranty & Maintenance Booklet. This warranty does not apply to Subaru performance parts unless otherwise specified in writing.

## WEAR ITEM COVERAGE

Remote transmitter batteries, brake pads, brake shoe linings and clutch disk linings are considered to be wear items. When replacement is necessary because of wear, Authorized Genuine Subaru Replacement Parts & Accessories Limited Warranty coverage is as follows:

- 2003 and later model year vehicles: one year regardless of mileage or the balance of the Basic New Vehicle Limited Warranty, whichever is longer



## Authorized Genuine Subaru Battery Warranty Replacement Coverage

### Authorized Genuine Subaru Replacement Battery Warranty

This warranty applies to Authorized Genuine Subaru Replacement Batteries that fail due to a defect in material or workmanship that occurs under normal usage, while installed in a Subaru vehicle.

**Note:** The Original Equipment (OE) battery is covered by the Basic New Vehicle Limited Warranty only. No other warranty coverage applies. OE "maintenance free" batteries are not eligible for warranty cost prorating.





### Authorized Genuine Subaru Replacement Batteries

Authorized Genuine Subaru Replacement Batteries are warranted by the 30-month/unlimited mileage Authorized Genuine Subaru Replacement Battery Warranty or the balance of the Basic New Vehicle Limited Warranty, whichever is longer. During the 30-month Authorized Genuine Subaru Replacement Battery Warranty period, or the balance of the Basic New Vehicle Limited Warranty period, coverage includes reimbursement for testing and replacement labor costs provided the battery was installed by an authorized Subaru retailer. In addition, if the vehicle cannot be driven due to a defect covered by this warranty, the cost of towing to the nearest authorized Subaru retailer is covered.

Authorized Genuine Subaru Replacement Batteries that fail after the 30-month Authorized Genuine Subaru Replacement Battery Warranty period or the Basic New Vehicle Limited Warranty has expired are eligible for prorated warranty coverage for a limited period of 85 months. Reimbursement for testing, replacement labor or towing is not covered. Prorating begins on the date the battery was originally installed.

### RUST PERFORATION COVERAGE

Defective Authorized Genuine Subaru Replacement sheet metal body panels that are rusted completely through from the inside out (perforated by corrosion) will be

repaired or, at the option of SOA or an authorized Subaru retailer, replaced under this warranty. To obtain warranty coverage, the vehicle must be brought to an authorized Subaru retailer located anywhere in the United States as soon as reasonably possible after the discovery of rust perforation. The following items are not covered: (1) rusting of the outside of the underbody (floor pan) or any other part of the vehicle except body panels; (2) rust resulting from alteration of any body panels; (3) rust as a result of damage to paint caused by normal road hazards such as stones or other debris; (4) body panel rust caused by abuse, lack of maintenance, or damage to the vehicle; (5) rust caused by sand, mud, salt, submergence of a body panel in water, exposure to industrial fallout, chemical fallout, tree sap, hail, flooding or other causes beyond the control of SOA; and (6) other items listed under "What Is Not Covered."



In general, Rust Perforation Coverage applies to perforation due to corrosion only. Perforation is a rust-through condition, such as an actual hole in a sheet metal panel. Cosmetic or surface corrosion, such as that caused by stone chips or scratches in the paint, is not covered under this warranty. In addition, SOA or the Subaru retailer reserves the right to decide whether painting the repaired or replaced panel to match the original finish is feasible. SOA will not, under any circumstances, pay for painting the entire vehicle solely to match paint color.

### OWNER'S RESPONSIBILITY TO RETAIN PROOF OF PURCHASE AND MAINTENANCE

It is the owner's responsibility to retain documents that show the date of purchase and, if applicable, installation of the part or accessory, and to present those documents upon request at the time a warranty claim is made. Failure to present proof-of-purchase documents upon request may result in denial of a warranty claim. If applicable, it is also the owner's responsibility to retain proof that all inspection and maintenance services are performed when recommended and to check fluid levels and tire pressure regularly.

### HOW TO GET WARRANTY SERVICE

A defective Authorized Genuine Subaru Replacement Part or Accessory will be repaired, or at the option of SOA or an authorized Subaru retailer, replaced using new or remanufactured parts without charge to the owner for materials. In addition, if the part or accessory was originally installed by an authorized Subaru retailer, the owner will not be charged for labor.

**Warranty claims** must be made as soon as reasonably possible after a defect is discovered, but before the end of warranty coverage for the particular part. It is recommended that warranty claims be made at the Subaru retailer that sold the part or accessory, although warranty claims can be presented to any authorized Subaru retailer located anywhere in the United States. When a warranty repair or replacement is needed, the vehicle (or, if preferred, just the part or accessory) must be brought to an authorized Subaru retailer's place of business during normal business hours. Within one year after the installation of an Authorized Genuine Subaru Replacement Part or Accessory, SOA will pay the cost of having the vehicle towed to the nearest authorized Subaru retailer if the vehicle cannot be driven due to a defect covered by this warranty, but only if the defective part or accessory was originally installed in/on the vehicle

by an authorized Subaru retailer. In all cases, a reasonable time must be allowed for warranty repairs to be completed after the part or accessory is received by the retailer.



### WARNING CONCERNING NON-AUTHORIZED GENUINE SUBARU REPLACEMENT PARTS & ACCESSORIES

Authorized Genuine Subaru Replacement Parts & Accessories are new or remanufactured items that have been approved, recommended, and supplied by SOA for installation on the vehicle. Some retailers sell both Authorized Genuine Subaru Replacement Parts & Accessories, as well as other parts and accessories. This warranty applies only to Authorized Genuine Subaru Replacement Parts & Accessories. It does not apply to any other parts or accessories.



### WHAT IS NOT COVERED

This warranty does not cover: (1) any part or accessory that is covered by any other written warranty from its manufacturer or from SOA; (2) any part or accessory installed in the vehicle prior to or at the time of its delivery; (3) the performance of any normal maintenance services or replacement of any normal maintenance or wear items, except brake pads/shoe linings, and clutch disks, which are covered for a period of one year regardless of mileage; (4) normal deterioration of appearance items; (5) labor unless the part or accessory was originally installed by an authorized Subaru retailer; (6) the replacement of lost or contaminated lubricants or fluids (such as refrigerant in an air conditioning unit) unless the loss or contamination is a direct result of a defect covered under this warranty; (7) part failure when used parts are used in conjunction with new parts and; (8) performance parts as defined by SOA.

This warranty does not cover any part or accessory that malfunctions, fails or is damaged due to: (1) objects striking the vehicle or any road hazards, whether on or off the road; (2) collision, accident, abuse, neglect, misuse, or any other causes beyond the control of SOA; (3) the failure either to perform any normal maintenance on or follow any operating instructions for the part or accessory; (4) the failure to follow the operating instructions for the vehicle set forth in the Owner's Manual or failure to follow the schedule of recommended inspection and maintenance for the vehicle set forth in the Warranty & Maintenance Booklet; (5) improper installation,



adjustment or repair of the vehicle or improper adjustment, repair or installation of the part or accessory; (6) alterations made by changing, adding to or removing any items from the vehicle or from the part or accessory; (7) installation in or attachment to the vehicle of accessories or equipment not approved or recommended by SOA; (8) commercial use of the vehicle, unless this exclusion is expressly waived in writing by SOA; (9) use of the vehicle in any race or competitive event; (10) airborne fallout including, but not limited to, chemicals, tree sap, bird droppings; salt, hail, windstorm, flooding, water, lightning, extreme temperatures, or any other environmental cause; (11) failure to follow recommendations on fuel use contained in the Owner's Manual; (12) if the vehicle has been dismantled or changed in such a manner that constitutes a material alteration of its original construction; (13) damage to a covered part directly caused by the failure of a non-covered part or occurrence of event, and; (14) damage caused by adding or applying chemicals other than those approved or recommended by SOA.

### GENERAL

SOA, through an authorized Subaru retailer, will repair or replace under this warranty Authorized Genuine Subaru Replacement Parts & Accessories that malfunction or fail during the warranty period as a result of a manufacturing defect. When a defective part or accessory is originally installed by an authorized Subaru retailer, that servicing Subaru retailer will also replace, without charge, all

lubricants and fluids that become contaminated or lost as a result of making any such repairs. However, SOA has no control over damage that occurs to the part or accessory caused by such things as objects striking the vehicle, collision, misuse, improper installation, or lack of maintenance. Therefore, damage to a part or accessory for any reason that occurs as a result of the way the vehicle is operated or treated is not covered under this warranty.

SOA, its distributors, and authorized Subaru retailers reserve the right to make changes in parts and accessories sold by them at any time without incurring any obligation to make the same or similar changes in parts and accessories previously sold by them.

THIS WARRANTY IS THE ONLY EXPRESS WARRANTY BY SOA ON AUTHORIZED GENUINE SUBARU REPLACEMENT PARTS & ACCESSORIES PURCHASED AFTER DELIVERY OF THE VEHICLE IN WHICH THEY ARE INSTALLED. SOA, its distributors, and authorized Subaru retailers do not authorize any person to assume for any of them any obligations or liabilities greater than or different from those set forth in this warranty. This warranty gives the owner specific rights, and the owner may also have other rights which vary from state to state.

ANY IMPLIED WARRANTY OF MERCHANTABILITY OR FITNESS FOR A PARTICULAR PURPOSE APPLICABLE TO THE PART OR ACCESSORY IS LIMITED IN DURATION TO THE PERIOD OF THIS WARRANTY. Some states do not allow limitations on how long an implied warranty lasts; therefore, the above limitation may not apply.

SOA, ITS DISTRIBUTORS, AND AUTHORIZED SUBARU RETAILERS SHALL NOT BE LIABLE FOR ANY LOSS OF USE OF THE VEHICLE; FOR ANY ALTERNATE TRANSPORTATION; LODGING, FOOD OR TELEPHONE EXPENSES; FOR ANY DAMAGE TO GOODS, COMMERCIAL LOSS, LOSS OF TIME OR INCONVENIENCE; OR FOR ANY OTHER INCIDENTAL OR CONSEQUENTIAL DAMAGES. Some states do not allow the exclusion of limitation of incidental or consequential damages; therefore, the above limitation or exclusion may not apply.

### THIS WARRANTY IS SUBJECT TO CHANGE

Consult your Subaru retailer for actual coverage at the time of part or accessory purchase.